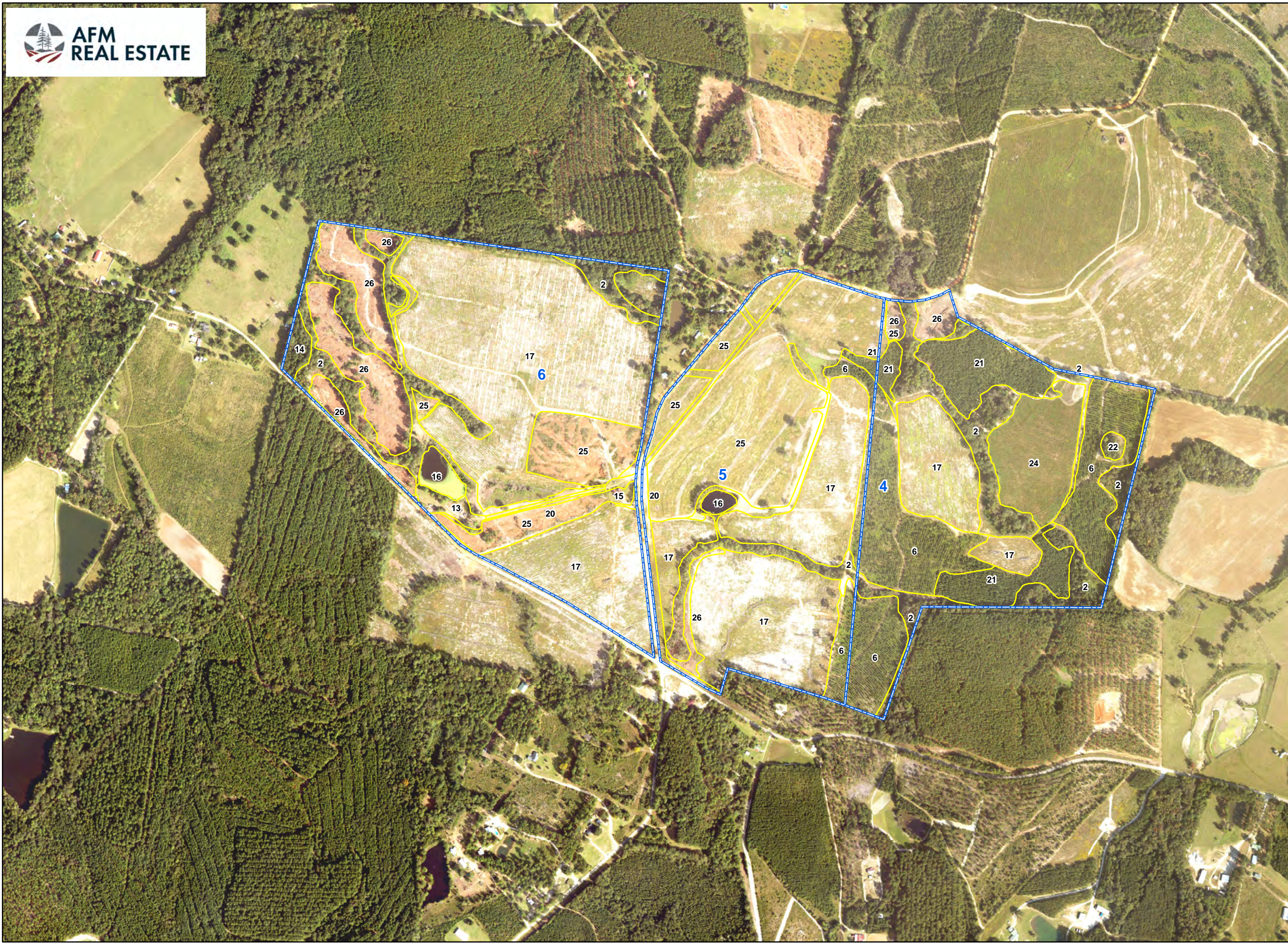


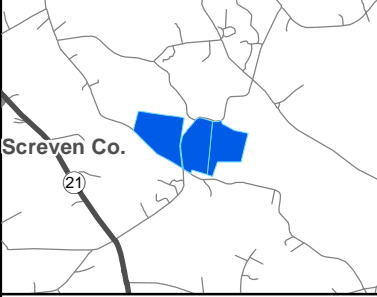
COMPARTMENT: 4,5,6
 TRACT: Beulah Longleaf Farm
 OWNERSHIP: Gibson
 COUNTY: Screven
 STATE: Georgia
 ACRES: 327.77

| STAND | DESCRIPTION | ACRES |
|-------|-------------|-------|
| 4-17 | LLURP-2023 | 13.18 |
| 4-2 | PHBBN-1950 | 19.83 |
| 4-21 | LBCFP-2018 | 15.32 |
| 4-22 | UDCEO | 0.68 |
| 4-24 | LLURP-2020 | 11.9 |
| 4-25 | LLURP-2025 | 0.38 |
| 4-26 | LBCFP-2025 | 2.99 |
| 4-6 | LLURP-2016 | 32.02 |
| 5-16 | UDPDO | 0.8 |
| 5-17 | LLURP-2023 | 40.78 |
| 5-2 | PHBBN-1950 | 6.48 |
| 5-20 | UDPLO | 3.77 |
| 5-21 | LBCFP-2018 | 0.56 |
| 5-25 | LLURP-2025 | 41.45 |
| 5-26 | LBCFP-2025 | 1.4 |
| 5-6 | LLURP-2016 | 5.75 |
| 6-13 | UDHCO | 1.74 |
| 6-14 | LBCFP-1990 | 1.48 |
| 6-15 | UDHSO | 0.5 |
| 6-16 | UDPDO | 1.87 |
| 6-17 | LLURP-2023 | 73.89 |
| 6-2 | PHBBN-1950 | 18.16 |
| 6-20 | UDPLO | 0.44 |
| 6-25 | LLURP-2025 | 14.35 |
| 6-26 | LBCFP-2025 | 18.05 |



Date: 6/1/2026
 1:15840
 1 inch = 660 feet

COMPARTMENTS
 STANDS



This product is for informational purposes and may not have been prepared for, or suitable for legal, engineering or survey purposes. Users should review or consult the primary data sources to ascertain the usability of the information.