



Miller Creek Farms Jones County, GA.

Miller Creek Farms

244 +/- Acres
\$1,099,387 or \$4500/Ac.
Jones County, Georgia

The Offering:

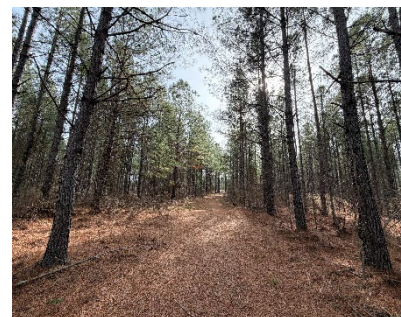
Miller Creek Farm — 244 Acres of Timberland and recreation in Jones County.

Nestled in the heart of Jones County, Miller Creek Farm offers a rare opportunity to own 244 acres of well-managed timberland surrounded by natural beauty. With more than 5,000 feet of frontage along Damascus Church Road, this exceptional property blends investment potential with the desires and privacy of rural life.

The tract features merchantable pine stands of varying age classes, meticulously maintained through years of active forest management. Whether your goals are timber income, recreational use, or a combination of both, Miller Creek Farm offers the flexibility and productivity that discerning landowners seek.

Bordering the Cedar Creek Wildlife Management Area, Miller Creek Farm enjoys direct access to thousands of acres of protected wilderness—perfect for hunting, hiking, or simply appreciating Georgia's abundant wildlife. The property's location provides the feeling of total seclusion, yet it's only minutes from Downtown Gray, providing easy access to shopping, dining, and local amenities.

This is more than land—it's legacy acreage with investment-grade timber, unrivaled privacy, and a connection to the outdoors.



CONTACT:

Nathan Greer, Broker
AFM Real Estate
125 Plantation Center Dr. 700A
Macon, GA. 31210
478.232.9241
Nathan.Greer@afmforest.com

Neither seller nor its representatives warrant the completeness or accuracy of the information. Each prospective purchaser should make its own determination as to timber volumes, timber quality, logging feasibility, acreage, access, and federal and state environmental and regulatory constraints relating to the use of the property and the harvest of timber therefrom. Seller, its brokers, managers, agents and employees, make no representation or warranties, express or implied, as to the accuracy or completeness of the information contained herein or as to the property, its condition, boundaries, timber volumes, acreage, wetlands, or fitness for a particular purpose. The successful purchaser will accept the property in its present condition, "AS IS, WHERE IS, with all faults", at closing.