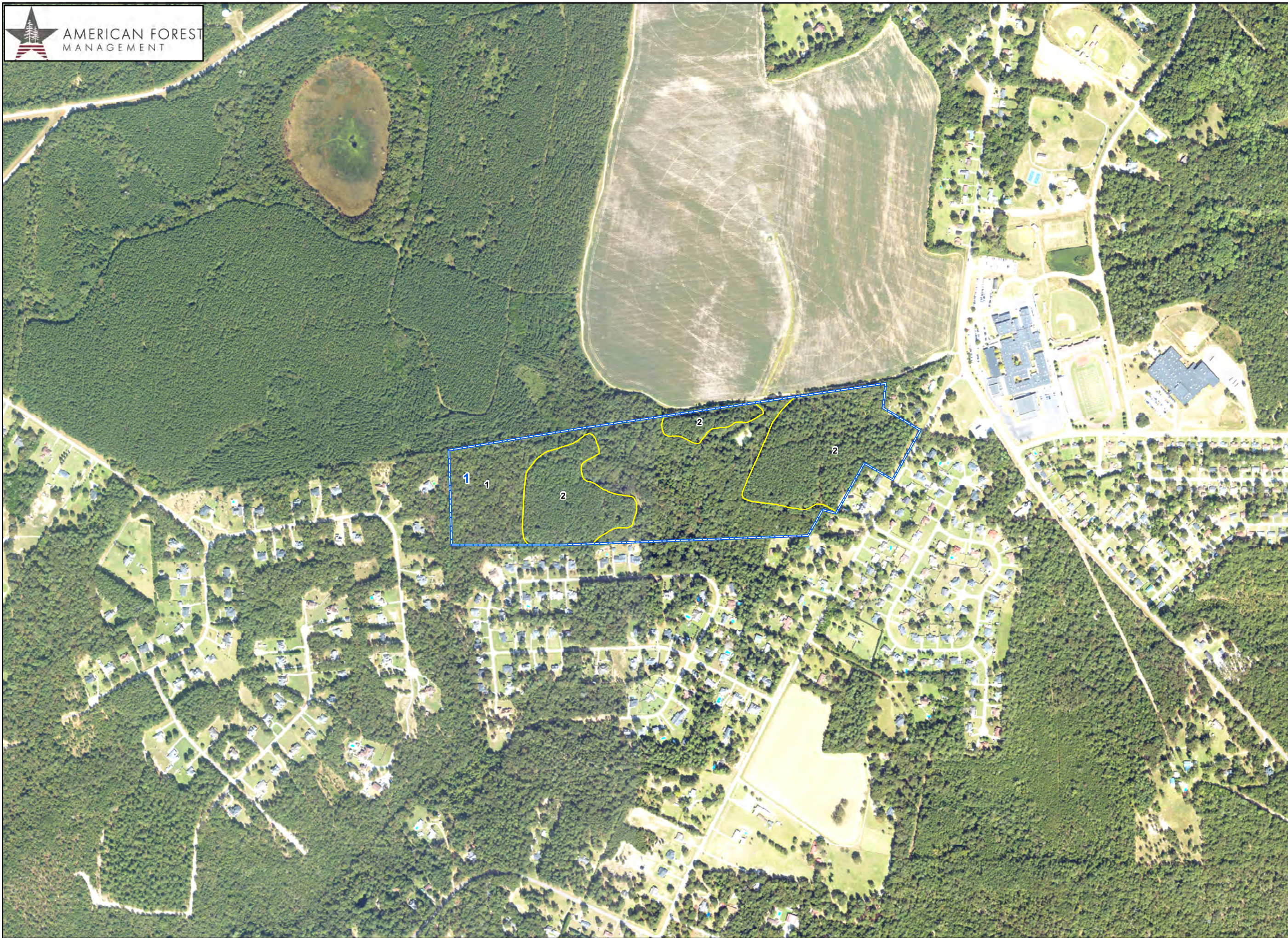




COMPARTMENT: 1
TRACT: SW01
OWNERSHIP: SHANKLIN & WALL
COUNTY: Richmond
STATE: Georgia
ACRES: 67.24

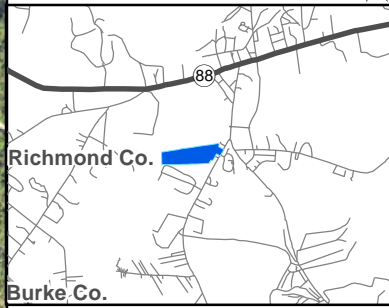
STAND	DESCRIPTION	ACRES
1	PHBBN-1960	35.99
2	LBURN-1993	31.25



Date: 4/22/2026
1:15840
1 inch = 660 feet

 COMPARTMENTS
 STANDS

0 330 660 Feet



This product is for informational purposes and may not have been prepared for, or suitable for legal, engineering or survey purposes. Users should review or consult the primary data sources to ascertain the usability of the information.