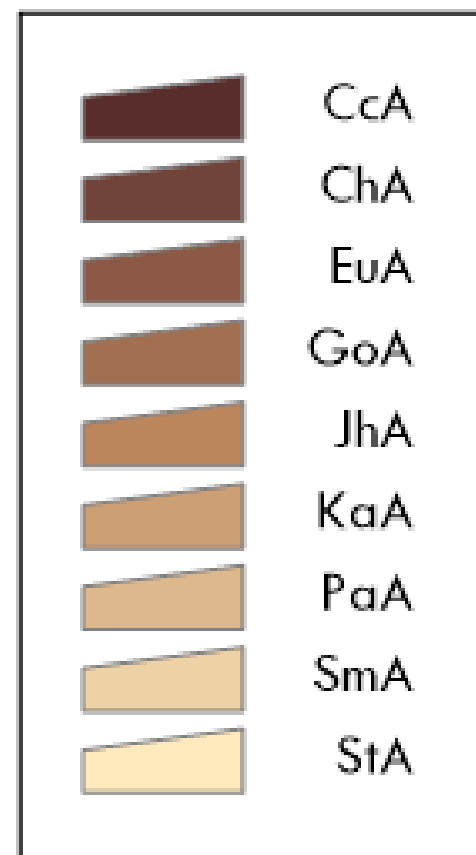
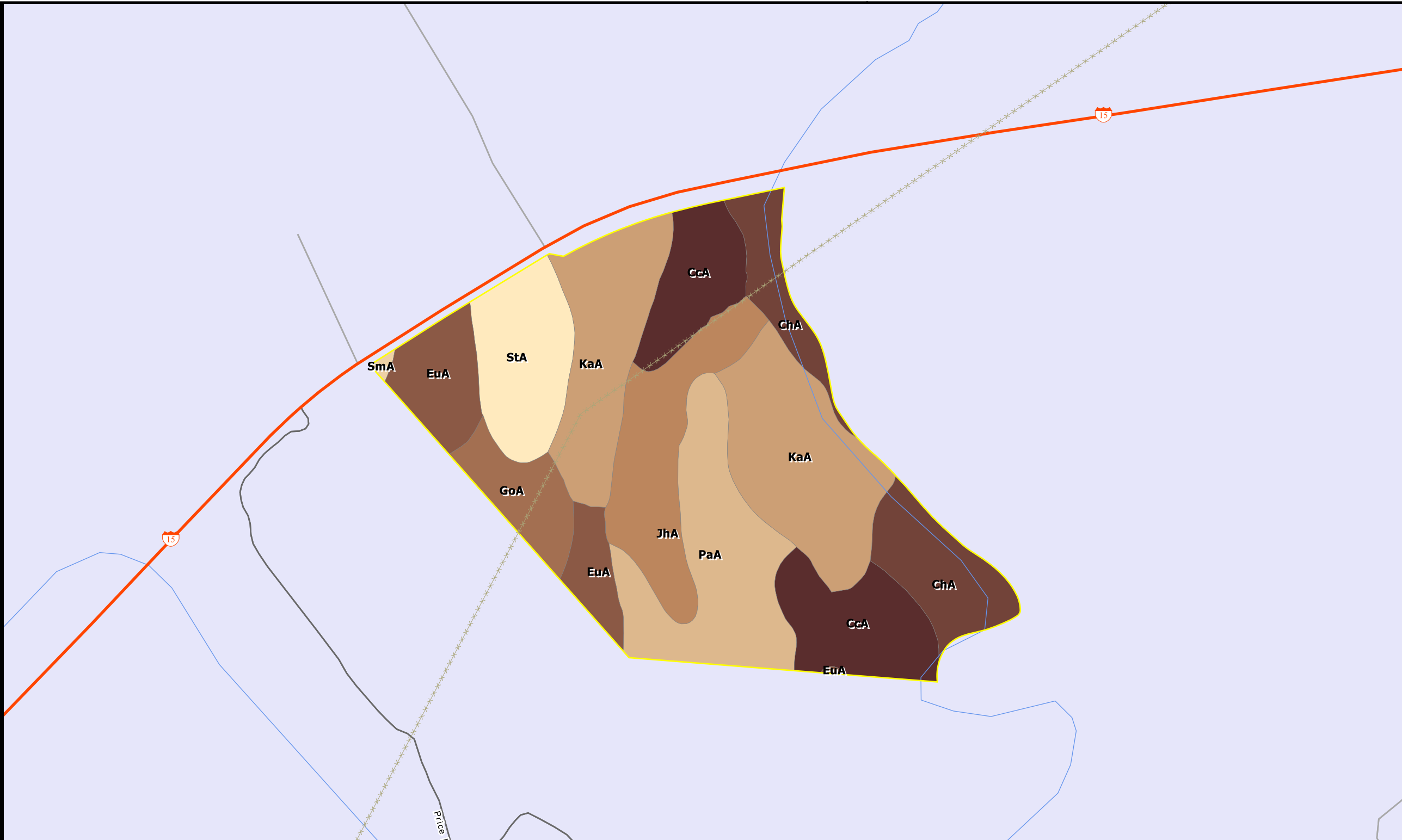
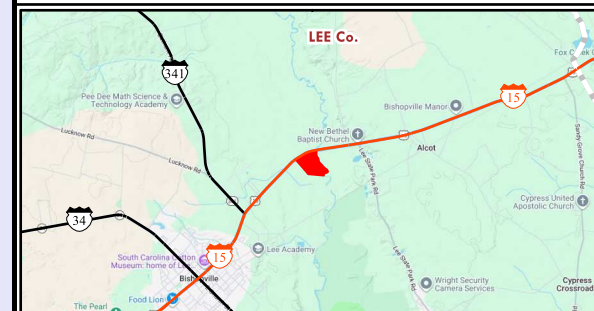


COUNTY: LEE
STATE: SC
ACRES: 77.31

Map Scale 1 in = 462 ft
 Reference Scale 1:5544



AFM Real Estate
AFMRealEstate.com



SOIL SYMBOL	SOIL NAME	FARMLAND	ACRES
CcA	Chastain-Chewacla complex, 0 to 2 percent slopes, frequently flooded	Not prime farmland	11.28
ChA	Chewacla-Chastain complex, 0 to 2 percent slopes, frequently flooded	Farmland of statewide importance	8.88
EuA	Eunola sandy loam, 0 to 2 percent slopes, rarely flooded	All areas are prime farmland	6.32
GoA	Goldsboro sandy loam, 0 to 2 percent slopes	All areas are prime farmland	3.81
JhA	Johns loamy sand, 0 to 2 percent slopes, rarely flooded	All areas are prime farmland	8.71
KaA	Kalmia loamy sand, wet substratum, 0 to 2 percent slopes, rarely flooded	All areas are prime farmland	20.28
PaA	Paxville coarse sandy loam, 0 to 2 percent slopes, occasionally flooded	Farmland of statewide importance	11.69
SmA	Smithboro sandy loam, 0 to 2 percent slopes	Farmland of statewide importance	0.16
StA	State-Eunola complex, 0 to 2 percent slopes, rarely flooded	All areas are prime farmland	7.04



This product is for informational purposes and may not have been prepared for, or suitable for legal, engineering or survey purposes. Users should review or consult the primary data sources to ascertain the usability of the information.