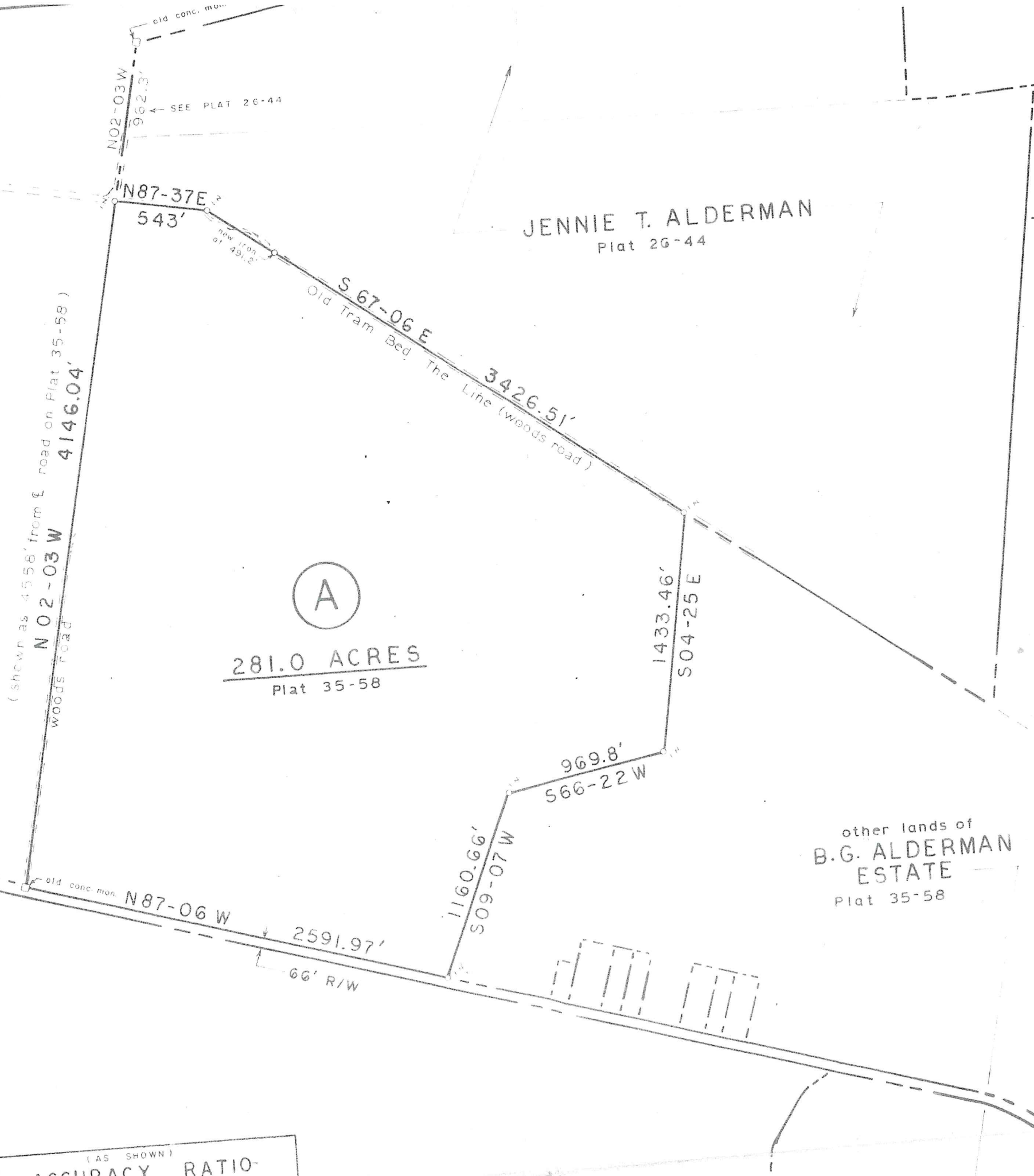


INTERNATIONAL
PAPER CO.
Plat 28-1



JENNIE T. ALDERMAN
Plat 26-44

(A)
281.0 ACRES
Plat 35-58

other lands of
B.G. ALDERMAN
ESTATE
Plat 35-58

359.14'
S65-24W
corner not placed

C
A

(AS SHOWN)
ACCURACY RATIO