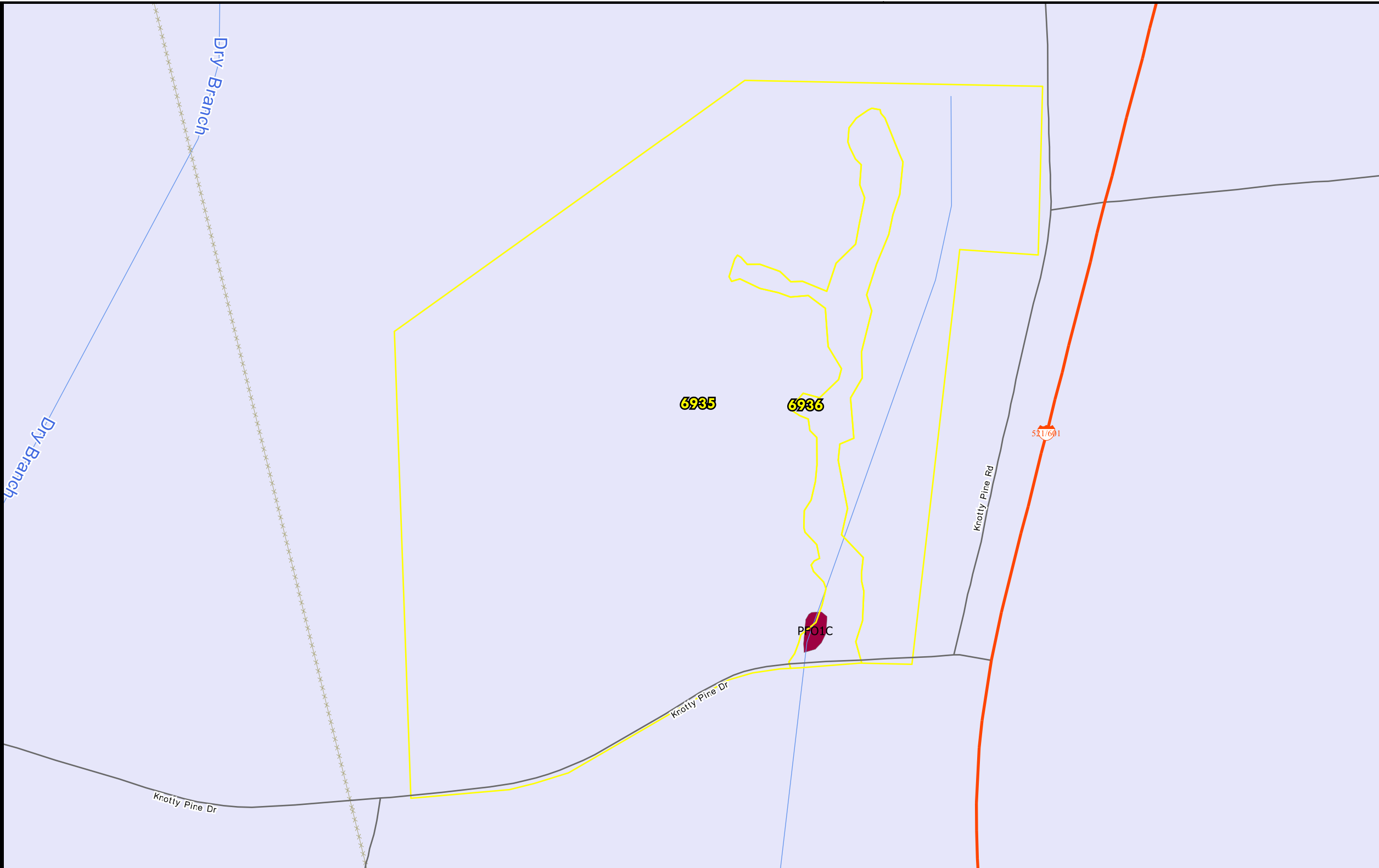
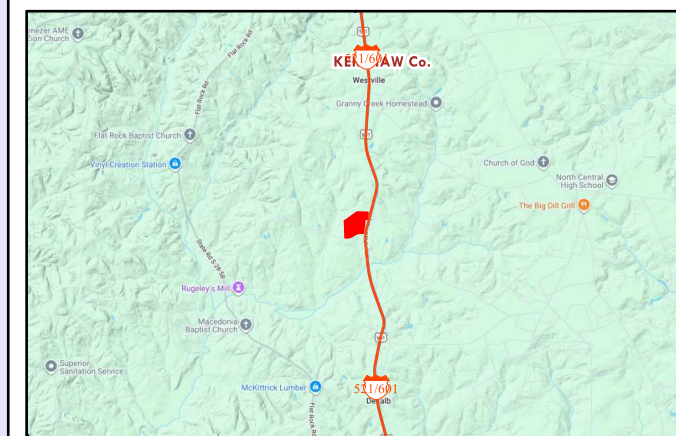
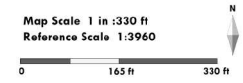


GWC-654

COUNTY: KERSHAW
 STATE: SC
 ACRES: 71.6

AFM Real Estate
 AFMRealEstate.com



WETLAND TYPES

PFO1C

| WETLAND SYMBOL | WETLAND TYPE | ACRES | STAND | ORIGIN | DOM_S_NAME | DOM_WETLAND1 | DOM_WETLAND2 | DOM_WETLAND3 | ACRES |
|----------------------------|-----------------------------------|-------|-------|---------|------------|--------------|--------------|--------------|-------|
| PFO1C | Freshwater Forested/Shrub Wetland | 0.16 | 6935 | OPEN | CUTOVER | | | | 66.29 |
| | | | 6936 | NATURAL | HARDWOOD | | | | 5.27 |
| TOTAL ACRES = 71.56 | | | | | | | | | |



This product is for informational purposes and may not have been prepared for, or suitable for legal, engineering or survey purposes. Users should review or consult the primary data sources to ascertain the usability of the information.