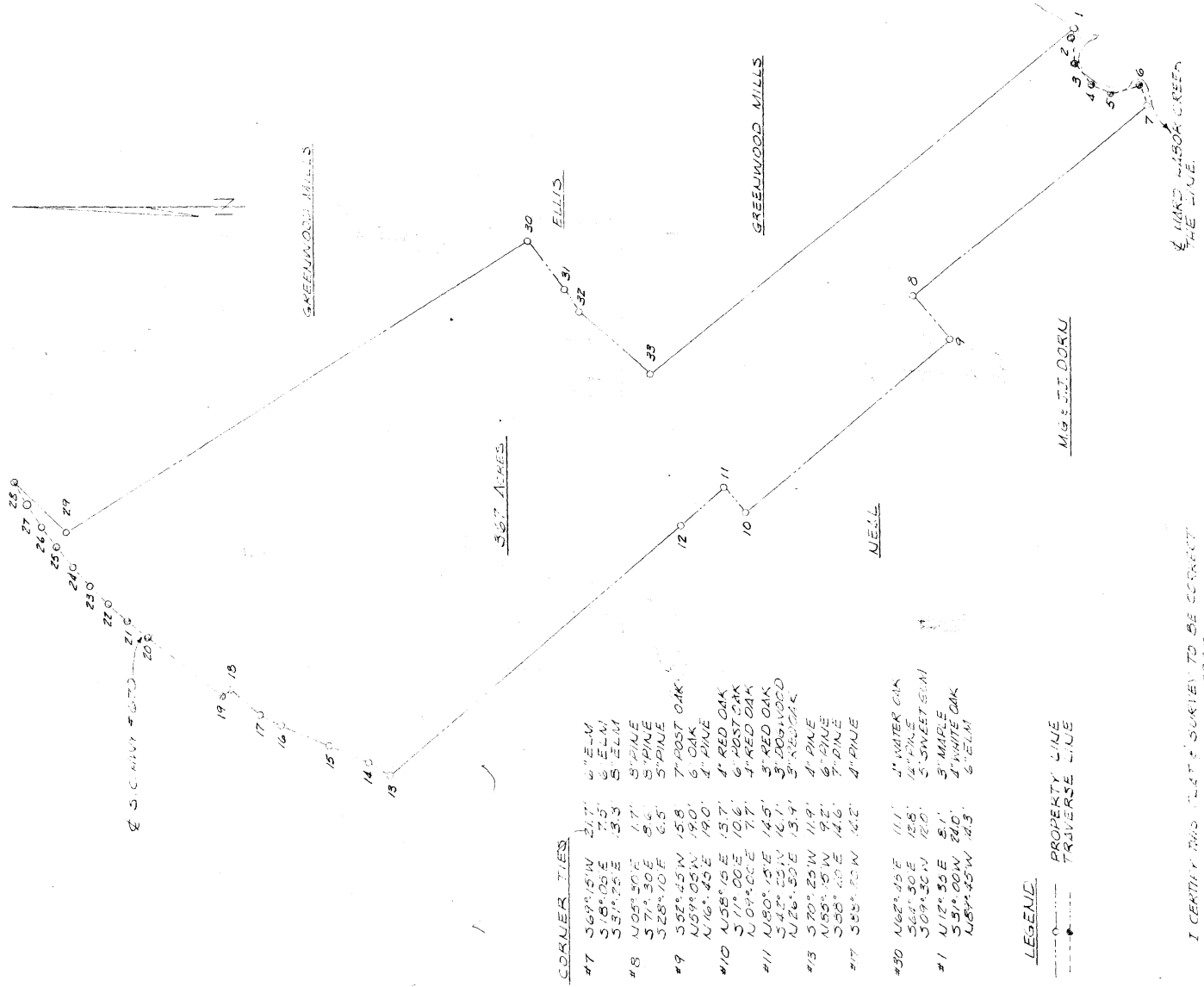


LINE	BEARING	DISTANCE
1-2	N 73° 05' N	77.20
2-3	S 82° 20' W	202.30
3-4	S 57° 05' W	271.40
4-5	S 42° 20' W	168.12
5-6	S 16° 49' E	253.60
6-7	S 68° 01' W	172.85
7-8	N 42° 42' W	237.65
8-9	S 45° 35' W	443.50
9-10	N 43° 36' E	257.00
10-11	N 42° 51' W	462.70
11-12	N 41° 21' W	501.50
12-13	N 27° 55' E	201.93
13-14	N 22° 15' E	337.40
14-15	N 21° 53' E	407.95
15-16	N 25° 21' E	186.10
16-17	N 40° 07' E	315.65
17-18	N 40° 13' W	386.10
18-19	N 37° 13' E	714.45
19-20	N 37° 45' E	100.50
20-21	N 40° 25' E	200.00
21-22	N 49° 12' E	200.00
22-23	N 46° 23' E	200.00
23-24	N 42° 25' E	200.00
24-25	N 52° 32' E	200.00
25-26	N 55° 23' E	200.00
26-27	N 58° 11' E	200.00
27-28	N 42° 41' W	509.40
28-29	S 55° 10' E	450.52
29-30	S 52° 20' W	455.55
30-31	S 57° 06' W	212.80
31-32	S 45° 30' W	719.55
32-33	S 40° 30' E	453.45

PLAT
 PROPERTY OF
CATAWBA TIMBER CO.
(MORROW TRACT #675)
 LOCATED
GREENWOOD COUNTY, S.C.
 SCALE: 1" = 660'
 20 JUNE 1966
DAVIS & FLOYD ENGINEERS, INC.
GREENWOOD, S.C.



CORNER TIES

- #7 3 1/2" 15' W 2 1/2" 5' ELM
- 3 1/2" 25' E 1 1/2" 5' ELM
- #8 1 1/2" 30' E 1 1/2" 5' PINE
- 5 7/8" 30' E 5' 5' PINE
- 3 2 1/2" 20' E 6 1/2" 5' PINE
- #9 3 3/8" 25' W 1 1/2" 7' POST OAK
- 1 1/2" 25' W 1 1/2" 6' OAK
- 1 1/2" 45' E 1 1/2" 4" PINE
- #10 1 1/2" 15' E 1 1/2" 4' RED OAK
- 3 1 1/2" 00' E 1 1/2" 6' POST OAK
- 1 1/2" 10' E 1 1/2" 4' RED OAK
- #11 1 1/2" 15' E 1 1/2" 3' RED OAK
- 3 1 1/2" 25' W 1 1/2" 3' DOGWOOD
- 1 1/2" 50' E 1 1/2" 3' RED OAK
- #13 5 7/8" 25' W 1 1/2" 4' PINE
- 1 1/2" 15' W 1 1/2" 6' PINE
- 3 3/8" 40' E 1 1/2" 7' PINE
- #17 3 3/8" 20' W 1 1/2" 4' PINE
- #30 1 1/2" 45' E 1 1/2" 1" WATER OAK
- 3 3/8" 30' E 1 1/2" 1 1/2" PINE
- 3 1/2" 20' W 1 1/2" 3" SWEET GUM
- #1 1 1/2" 30' E 1 1/2" 5' MAPLE
- 3 3/8" 20' W 1 1/2" 3' WHITE OAK
- 1 1/2" 45' W 1 1/2" 6' ELM

LEGEND

- PROPERTY LINE
- - - TRAVERSE LINE

I CERTIFY THIS SURVEY TO BE CORRECT TO THE BEST OF MY KNOWLEDGE.

J. R. P. P. P.
 C. C. P. and G. S.