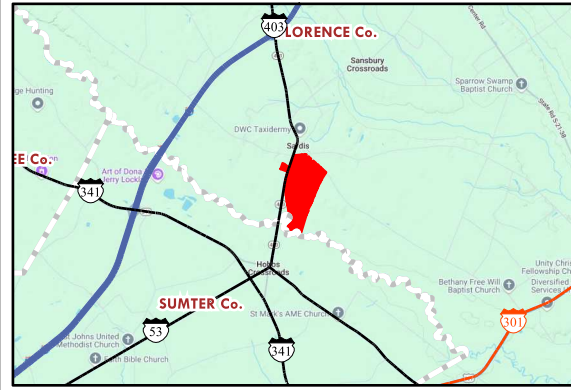


CRIPPLE CREEK TRACT

COUNTY:FLORENCE
STATE:SC
ACRES: 383

Map Scale 1 in :858 ft
Reference Scale 1:10296

AFM Real Estate
AFMRealEstate.com



- AGRICULTURE - 77 ac.
- HARDWOOD - 65.1 ac.
- HOUSE SITE - 1.1 ac.
- OPEN - 6.1 ac.
- PINE - 98.5 ac.
- PINE/HARDWOOD - 101.9 ac.
- POND - 2.3 ac.
- ROAD - 27.2 ac.
- WATER - 3.8 ac.

STAND	YEAR_EST	ORIGIN	DOM_S_NAME	S_T_DESC	ACRES
1	1970	NATURAL	HARDWOOD		65.1
2	2012	NATURAL	PINE/HARDWOOD		93.7
3	2020	PLANTED	PINE		5.4
4	2012	PLANTED	PINE		24.2
5	2012	PLANTED	PINE		12.5
6	2021	PLANTED	PINE		56.4
7	2012	NATURAL	PINE/HARDWOOD		8.2
991	0	OPEN	AGRICULTURE	AG FIELD	77.0
992	0	OPEN	POND	WATER	2.3
993	0	OPEN	WATER	WATER	3.8
995	0	OPEN	ROAD	ROAD	27.2
997	0	OPEN	OPEN	MISCELLANEOUS	6.1
998	0	OPEN	HOUSE SITE	HOUSE SITE	1.1
TOTAL ACRES =					383

This product is for informational purposes and may not have been prepared for, or suitable for legal, engineering or survey purposes. Users should review or consult the primary data sources to ascertain the usability of the information.

